



# HERON COURT APARTMENTS

The 33 Genesis Heron Court permanent supportive housing apartments are located in northeast Grand Rapids. These apartments at 2110 Leonard St. NE near the corner of Plymouth and Leonard are on the "The Rapid" bus line and are close to northeast side shopping malls. All of these apartments are dedicated to providing affordable housing to low-income individuals and families with disabilities.

These apartments offer a friendly community setting within a larger residential community. Residents will be able to enjoy the neighborhood of green trees and grass on rolling hills and be near city conveniences. Genesis has teamed up with area human service providers and funding agencies to provide special on-site support services to the tenants. Dwelling Place of Grand Rapids, Inc. provides apartment management services.

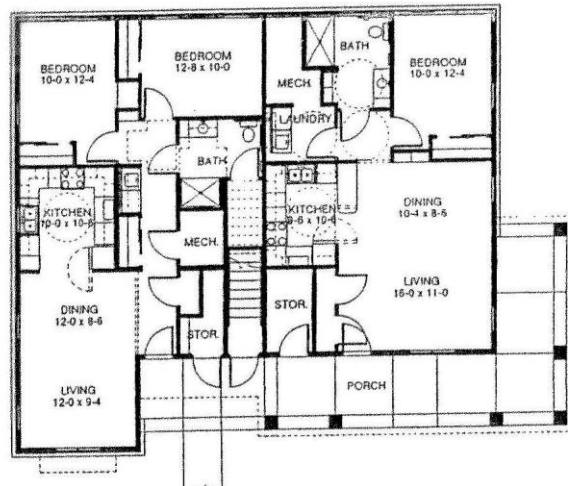
## Amenities

- On-site support staff
- Central air conditioning
- Extra storage capacity
- In-unit washer/dryer
- Dishwashers
- Garbage, sewer, water included
- On "The Rapid" bus line
- Shared Community room



## Architectural Characteristics

- High quality construction completed May 2004
- Eleven separate 2-story buildings
- Nineteen one-bedroom apartments
- Twelve two-bedroom apartments
- Two three-bedroom apartments
- On-site parking
- Private Unit entry
- Sixteen wheelchair accessible units



## Rental Information:

**In order to be placed on the waiting list, applicants MUST apply online at [www.grhousing.org](http://www.grhousing.org) or complete the attached GRHC paper application.**

Families and individuals are encouraged to apply for these apartments. Contact the assistant property manager at 616-855-0017 for information and application process. Tenant selection will be a joint decision by Genesis Non-Profit Housing Corporation, Pine Rest Christian Mental Health Services, and Dwelling Place of Grand Rapids, Inc. management personnel.



Equal Housing Opportunity

