



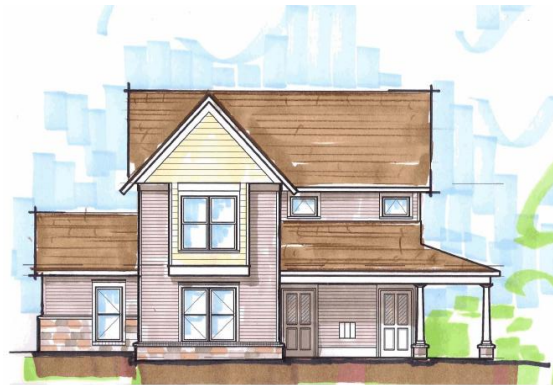
KINGSBURY PLACE APARTMENTS

The Genesis Non-Profit Housing Corporation has 44 permanent supportive housing apartments located at 725 N. Center Dr. in northwest Grand Rapids near Alpine Ave. and 4 Mile Rd. These apartments are on the "The Rapid" bus line and are within ¼ mile of Alpine Avenue. shopping malls. All of these apartments are dedicated to providing affordable housing to low-income individuals and families with disabilities.

These apartments offer a friendly community setting within a larger residential community. Residents will be able to enjoy the neighborhood of green trees and grass on rolling hills and be near city conveniences. Genesis has teamed up with Pine Rest Christian Mental Health Services to provide special on-site support services to the tenants. Dwelling Place of Grand Rapids, Inc. provides apartment management services.

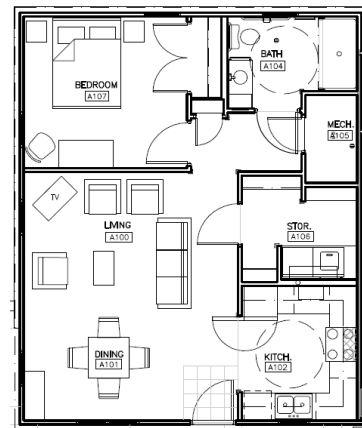
Amenities

- On-site support staff
- On-site property management staff
- Central air conditioning
- Extra storage capacity
- In-unit washer/dryer
- Dishwashers
- Garbage, sewer, water included
- On "The Rapid" bus line
- Shared Community room



Architectural Characteristics

- High quality construction completed in August 2006
- Ten separate 2-story buildings
- Thirty-one one-bedroom apartments
- Ten two-bedroom apartments
- Two three-bedroom apartments
- On-site parking
- Private Unit entry
- Twenty-two wheelchair accessible units
- Nine units with wheelchair roll-in showers



Rental Information:

Families and individuals are encouraged to apply for these apartments.

Please contact the assistant property manager at 616-988-4737 for information and application process. Tenant selection will be a joint decision by Genesis Non-Profit Housing Corporation, Pine Rest Christian Mental Health Services, and Dwelling Place of Grand Rapids, Inc. management personnel.



Equal Housing Opportunity



EQUAL HOUSING OPPORTUNITY